

# OptiQroute 2180 Series

## Eight-WAN Multi-Homing Security System



### Fiber Logic OptiQroute 2180 Series Scores High at the InforWorld Testing Center Lab

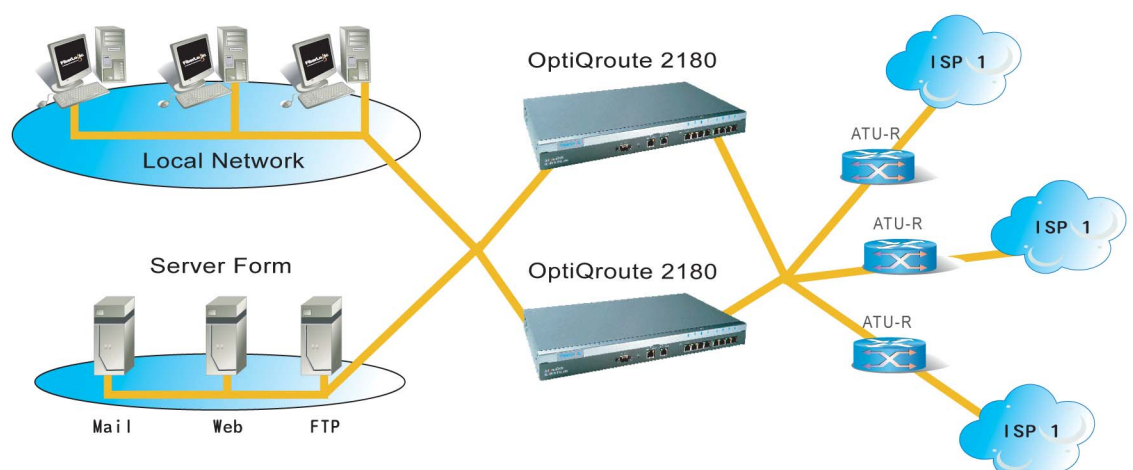
Reviewed and recommended by InforWord, the OptiQroute 2180 Multi-Homing Security Series, with multitude of functions, is a complete load balance system for WAN link Management.

OptiQroute 2180 Series can aggregate eight WAN links and provide both inbound and outbound traffic management. Its inbound and outbound load balance algorithms and fault tolerant capabilities eliminate potential business loss from unexpected disconnections by the Internet. In addition, its unique high availability feature ensures the aliveness of servers and provides an always-on sever environment to users. OptiQroute 2180 enhances your network with more reliability, scalability and better customer-satisfaction.

Aside from its powerful and effective load balancing capability, the system also offers robust security facilities including SPI firewall, Anti-DoS, VPNs and more. The security features will protect your trusted network against unpredicted intrusion behavior by outside hackers and other Internet security threats. Further, the VPN capability provides extremely secure LAN-to-LAN connectivity over eight broadband connections. Up to 300 LAN-to-LAN and up to 800 road warrior IPsec VPN tunnels are permitted.

The OptiQroute 2180 Series is ideal for your businesses that wish not only to upgrade the bandwidth, to excel the total performance, but also secure your trusted network.

### Application Diagram



## Specifications

Product		Eight-WAN Multi-Homing Security Gateway	
Model		2180	2180-HV
Hardware	CPU	PowerPC 333 MHz	PowerPC 333 MHz
	Memory	16 MB Flash, 192 MB SDRAM 1 MB SRAM	16 MB Flash, 192 MB SDRAM 1 MB SRAM
	WAN Port	8 * 10/100M Base-T	8 * 10/100M Base-T
	LAN Port	1 * 10/100M Base-T	1 * 10/100M Base-T
	DMZ Port	1 * 10/100M Base-T	1 * 10/100M Base-T
	Console Port	1 * RS232	1 * RS232
Load Balance Capacity	Direction	Inbound/Outbound	Inbound/Outbound
	Auto-Detect Line Status	Yes	Yes
	Throughput	100Mbps	100Mbps
	Virtual Server Load Balance	Yes	Yes
	Bandwidth Aggregation	Yes	Yes
	Algorithm	9 Kinds	9 Kinds
		Round-Robin	Round-Robin
		Weighted Round-Robin	Weighted Round-Robin
		Auto-Learning	Auto-Learning
		Dynamic Ratio	Dynamic Ratio
		Dynamic Weighted	Dynamic Weighted
		Fastest	Fastest
		Least Connection	Least Connection
	Priority	Priority	
	Latency	Latency	
	IP Aliasing	Yes	Yes
Security	SPI Firewall	Yes	Yes
	NAT/PAT	Yes	Yes
	IDS/IPS	Yes	Yes
	Anti-DoS	Yes	Yes
	DMZ Host	Yes (Hardware)	Yes (Hardware)
VPN	IPSec/L2TP/ PPTP	Yes/Yes/Yes	Yes/Yes/Yes
	Site-to-Site VPN Tunnels	300	300
	Road Warrior VPN Tunnels	800	800
	Key Exchange (IKE/Manual)	Yes	Yes
	Encryption Algorithm	DES/3DES/ AES (128, 192, 256-bit)	DES/3DES/ AES (128, 192, 256-bit)
	Authentication Algorithm	MD5, SHA1	MD5, SHA1
	PFS (DH Group)	1, 2, 5, 14, 15, 16, 17, 18	1, 2, 5, 14, 15, 16, 17, 18
	IPSec NAT Traversal	Yes	Yes
	Dead Peer Detection (DPD)	Yes	Yes
	Prevent Replay Attack	Yes	Yes
	Implementation	Software-based	Hardware-based

QoS	Direction	Inbound/Outbound	Inbound/Outbound
		Smart Outgoing	Yes
System Management	Remote Login & Management	Telnet/SSH/HTTP/ HTTPS	Telnet/SSH/HTTP/ HTTPS
	Remote Firmware Upgrade	Yes	Yes
	Configuration Restore/ Backup	Yes	Yes
	Quick Install	Yes	Yes
	Telnet/SSH	Yes/Yes	Yes/Yes
	SNMP	Yes	Yes
	MRTG	Yes	Yes
	Logging Alert	Yes	Yes
Service	Transparent Mode (Proxy ARP)	Yes	Yes
	DHCP Server/ Relay/ Client	Yes	Yes
	DNS Relay/ Server (HyperDNS)	Yes	Yes
	Virtual Server	Yes	Yes
	SMTP Fail-over	Yes	Yes
Routing	Static Routing	Yes	Yes
	RIP I, II	Yes	Yes
Reliability	OSPF	Yes	Yes
	System Auto-Detection & Recover	Yes	Yes
	Power & Fan Cooler	2 Sets (90 ~ 240 V)	2 Sets (90 ~ 240 V)
	Hot Swappable Power & Fan Cooler	Yes	Yes
	High Availability	VRRP	VRRP
Reporting	Log	Yes	Yes
	Real Time Trap Report	LED/SNMP/Mail/SMS	LED/SNMP/Mail/SMS
	Hardware Loading Report	Yes	Yes
	Bandwidth Management Report	Yes	Yes
Others	Dimension	443 x 274 x 45 mm	443 x 274 x 45 mm
	Weight	2.36 Kg	2.36 Kg
	Rack Mountable	Yes	Yes
	Power Supply	90 to 240V AC Internal	90 to 240V AC Internal

All models come with 3 years manufacturer warranty.



**Fiber Logic Communications, Inc.**  
5F-3, No.9 Prosperity Road One,  
Science-Based Industrial Park  
Hsinchu, Taiwan

Tel:+886-3-563-8889  
Fax:+886-3-563-8899  
<http://www.fiberlogic.com>  
E-mail:[datasales@fiberlogic.com](mailto:datasales@fiberlogic.com)